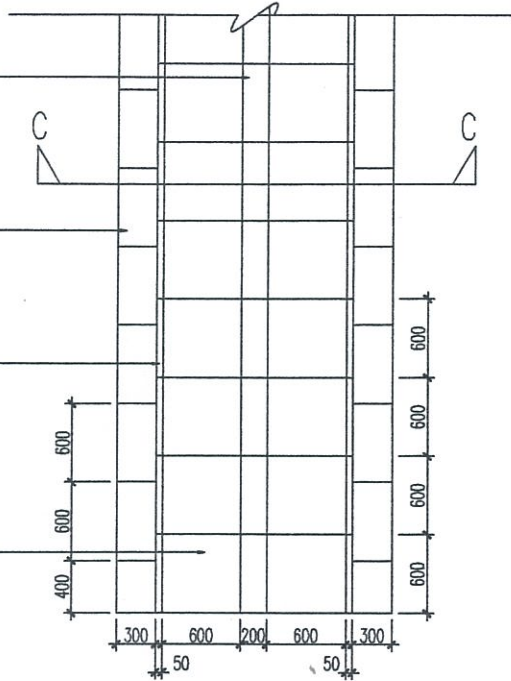


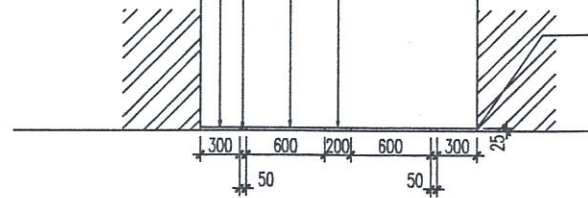
- 200mm x 600mm  
homogenous tile  
(white incolour)
- 300mm x 600mm  
homogenous tile  
(white incolour)
- 50mm x 600mm  
homogenous tile  
(black incolour)
- 600mm x 600mm  
homogenous tile  
(black incolour)



PLAN

- 50mm x 600mm  
homogenous tile  
(black incolour)
- 300mm x 600mm  
homogenous tile  
(white incolour)

- 600mm x 600mm  
homogenous tile  
(black incolour)
- 200mm x 600mm  
homogenous tile  
(white incolour)
- 25mm mortar coating  
/slab of glue cement



SECTION C-C